

ROBOLUTION 2018

See Guider

Rules:

1. One team can have maximum **5** members.
2. The number of rounds and event track will be announced **3** weeks before the competition.
3. Track details (angle, lengths) will be uploaded with the track.
4. Point distribution will be uploaded with the track.
5. In the time of race, only 1 member will be able to stay in the arena.
6. Points will be awarded only if the robot travels through the whole path of the checkpoint and crosses the checkpoint. **No checkpoint can be skipped.**
7. Touching the bot during runtime is a compulsory restart. Restart is a must in case of a line loss.
8. Max no of restarts: 5.
9. Max allowed voltage difference between any two points of the circuitry is 24V. Every bot must have a power switch/kill switch.
10. Max number of switches allowed is 2 (excluding power switch).

Bot specifications:

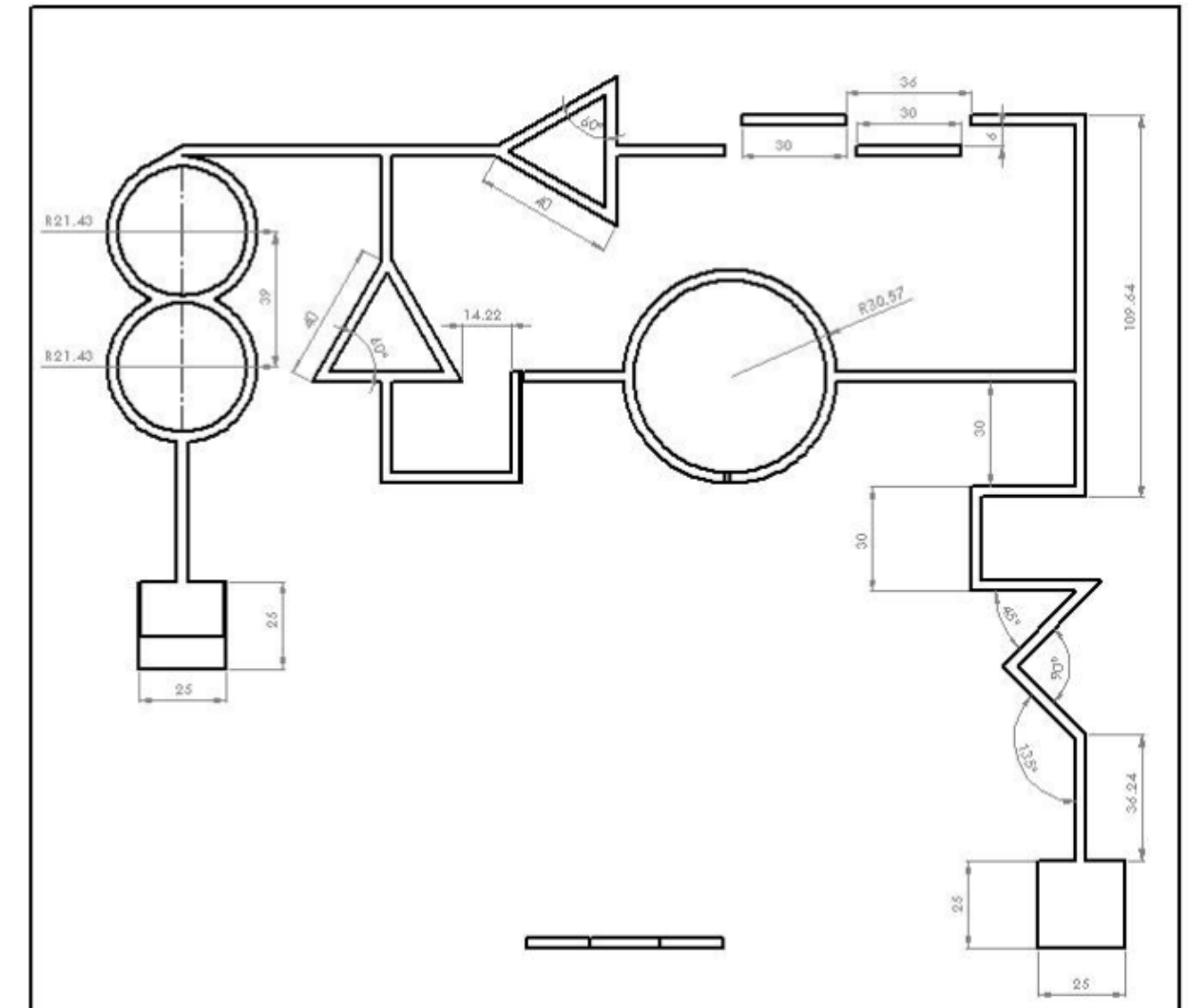
1. Line Followers must be self-contained, and not externally operated by wire or by remote radio control during the race. The robot must not be built from any sort of ready-made chassis.
2. Weight: Max 3 kg
3. Height: Max 25 cm
4. Length: Max 25 cm
5. Breadth: Max 25 cm

Arena Specifications:

1. Starting & Ending Box is **25*25** cm² in.
2. Track will be on '**Black on White**'.
3. Track line will have a min breadth of **3cm** through the whole track.
4. Final round will have the wall portion
5. Bridge angle will be **30°**

Measurement Required in 1st round:

all measurement are in cm and degree



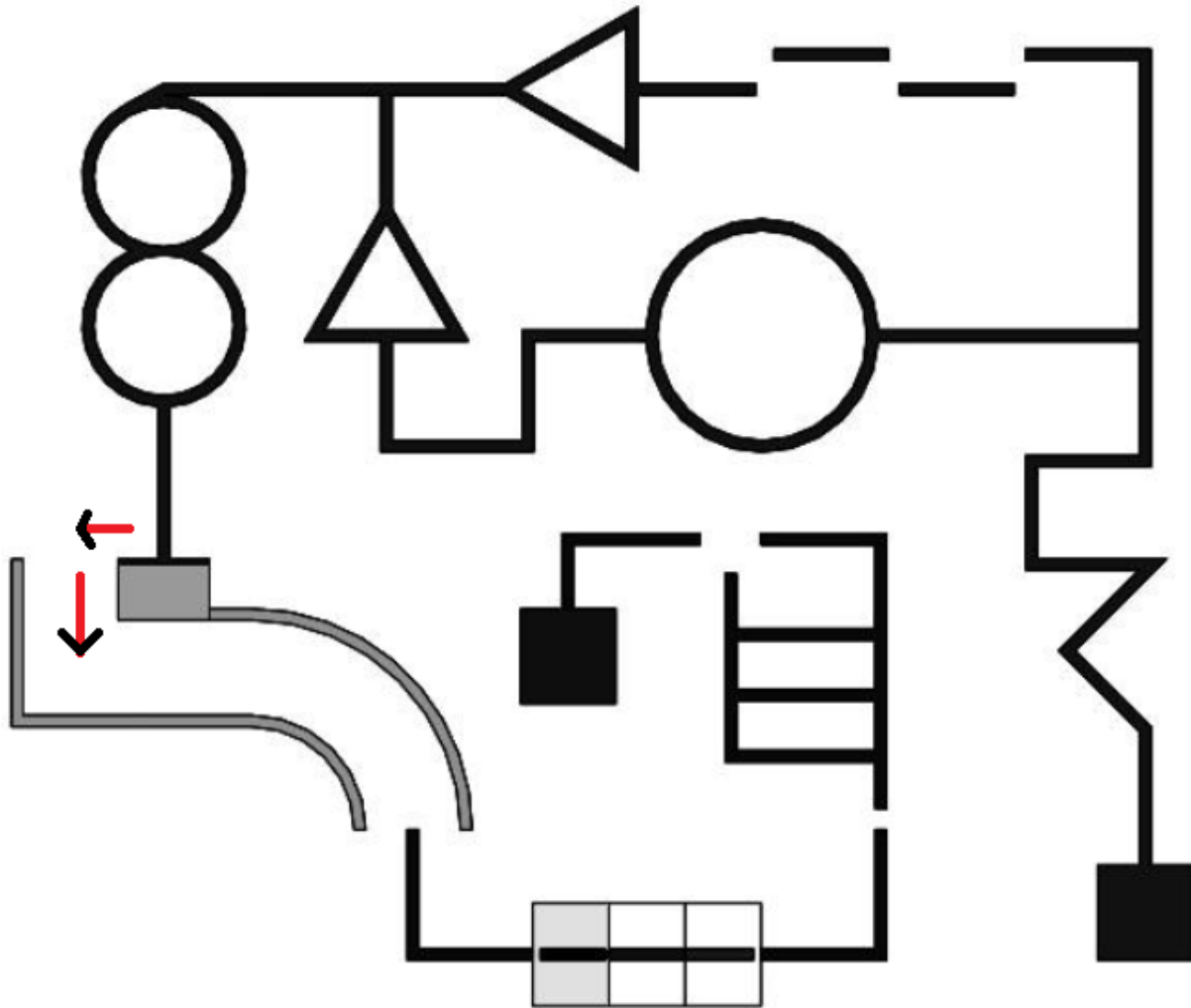
Final Rounds Track:

Arena Specification & rules for Final round:

- There will be no colored portion in this track this year
- There is a tunnel on the final track. Before entering, the bot has to recognize an ash colored box of 16*16 cm²
- Bridge angle is 30°

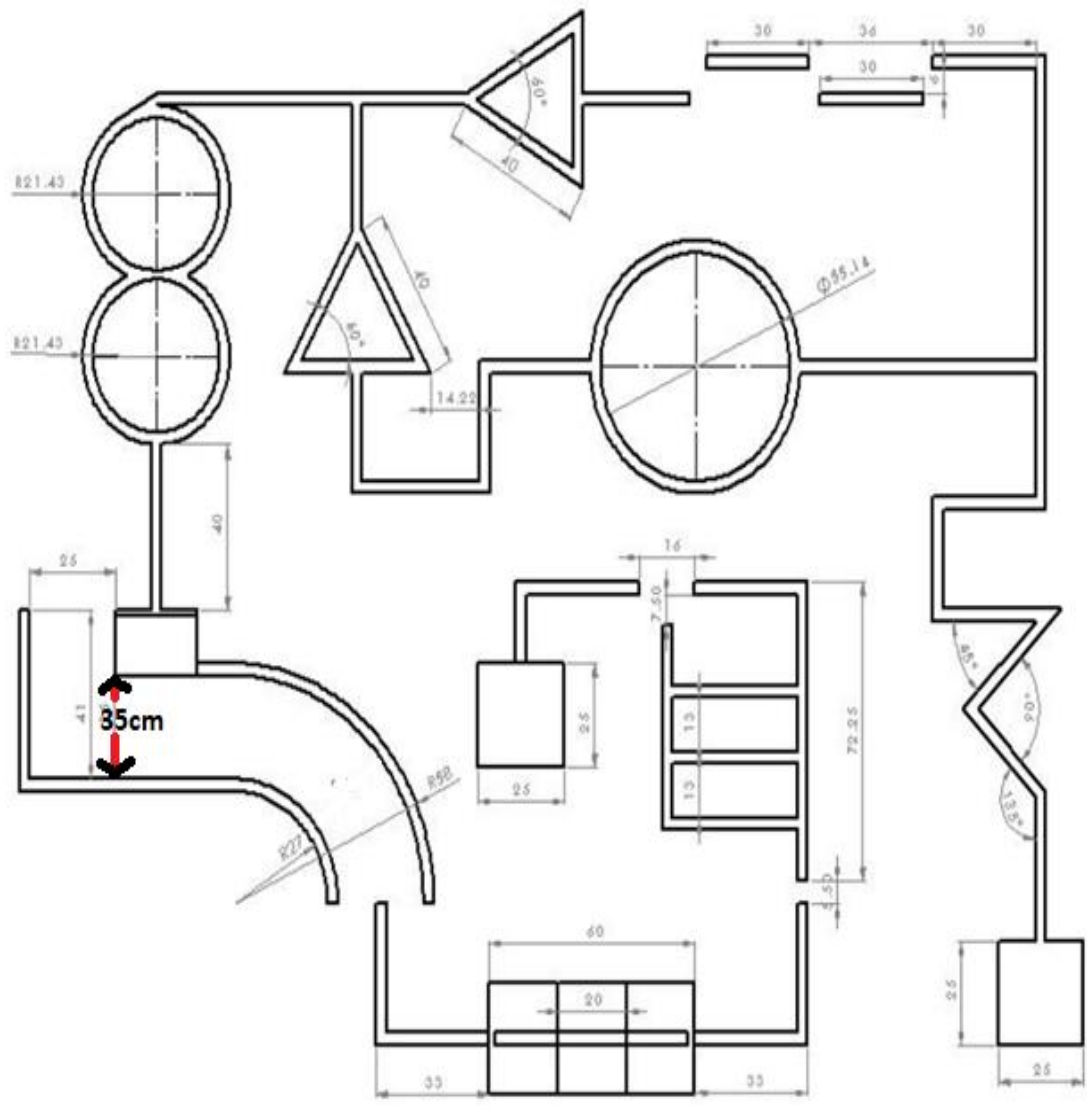
Arena Picture:

2D View:



Track with Measurement:

** All measurement in cm and degree



Isometric View:

